

Standalone Scheduler Property File Creation  
Oracle FLEXCUBE Universal Banking  
Release 12.3.0.0.0  
[December] [2016]



---

# Table of Contents

- 1. CREATING PROPERTY FILE FOR STANDALONE SCHEDULER..... 1-1**
- 1.1 INTRODUCTION..... 1-1
- 1.2 CREATING PROPERTY FILE..... 1-1
  - 1.2.1 *Enabling Multi entity*..... 1-3
  - 1.2.2 *Setting Common Properties*..... 1-5
  - 1.2.3 *Configuring Scheduler*..... 1-6
  - 1.2.4 *Setting EMS Properties*..... 1-15
  - 1.2.5 *Setting BIP and BIP Advice Report*..... 1-20
  - 1.2.6 *Setting GI Upload Properties*..... 1-21
  - 1.2.7 *Setting Report Properties*..... 1-23
  - 1.2.8 *Setting BPEL Properties*..... 1-25
  - 1.2.9 *Setting ELCM Properties*..... 1-29
  - 1.2.10 *Saving Property File*..... 1-29

---

# 1. Creating Property File for Standalone scheduler

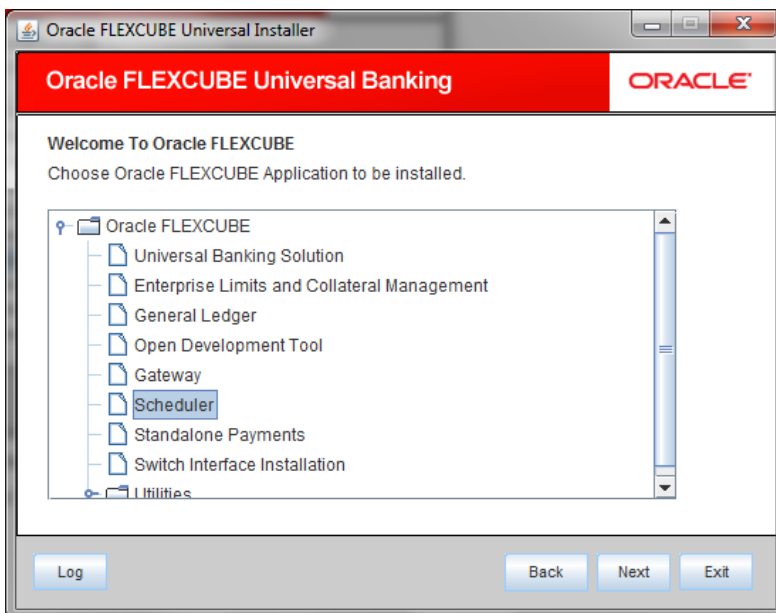
## 1.1 Introduction

This chapter explains the steps to create property file for Standalone Scheduler.

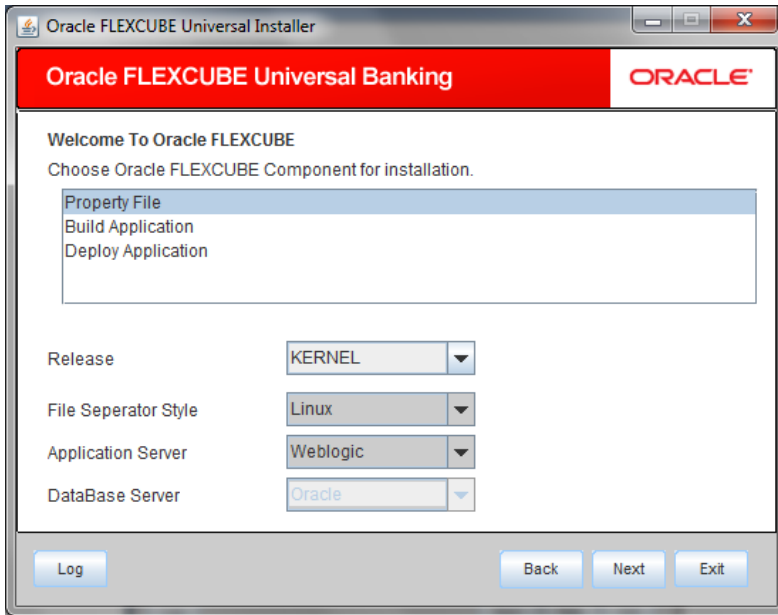
## 1.2 Creating Property File

To create the property file for Oracle FLEXCUBE, follow the steps given below:

1. Launch Oracle FLEXCUBE Universal Banking Solution Installer.
2. Click 'Next' and the following screen is displayed.



3. Select 'Scheduler'.
4. Click 'Next' and the following screen is displayed:



5. Select 'Property File'.
6. Specify the following details:

### **Operating System**

Specify the operating system in which you are creating the property file. Select the appropriate one from the adjoining drop-down list.

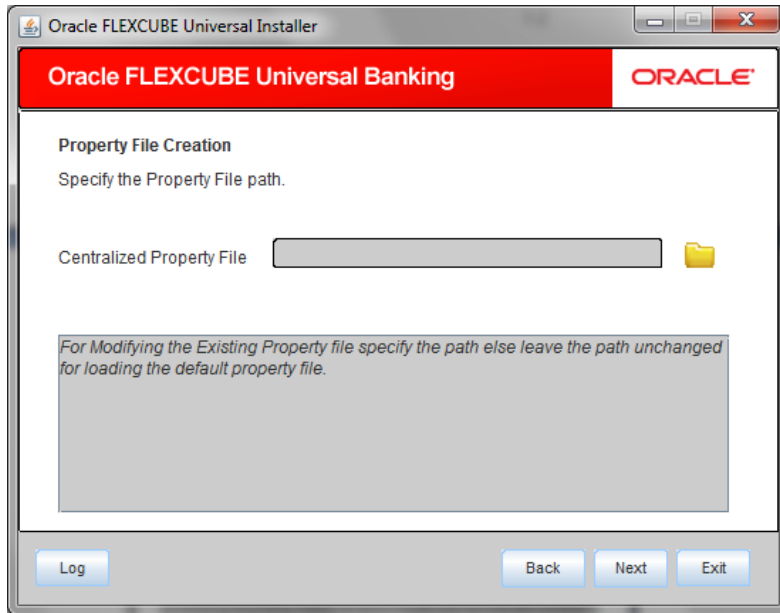
### **Application Server**

Specify the application server in which you are creating the property file. Select the appropriate one from the adjoining drop-down list.

### **Release**

Select the release from the adjoining drop down list.

7. Once you have specified the details, click 'Next' to continue and following screen is displayed:

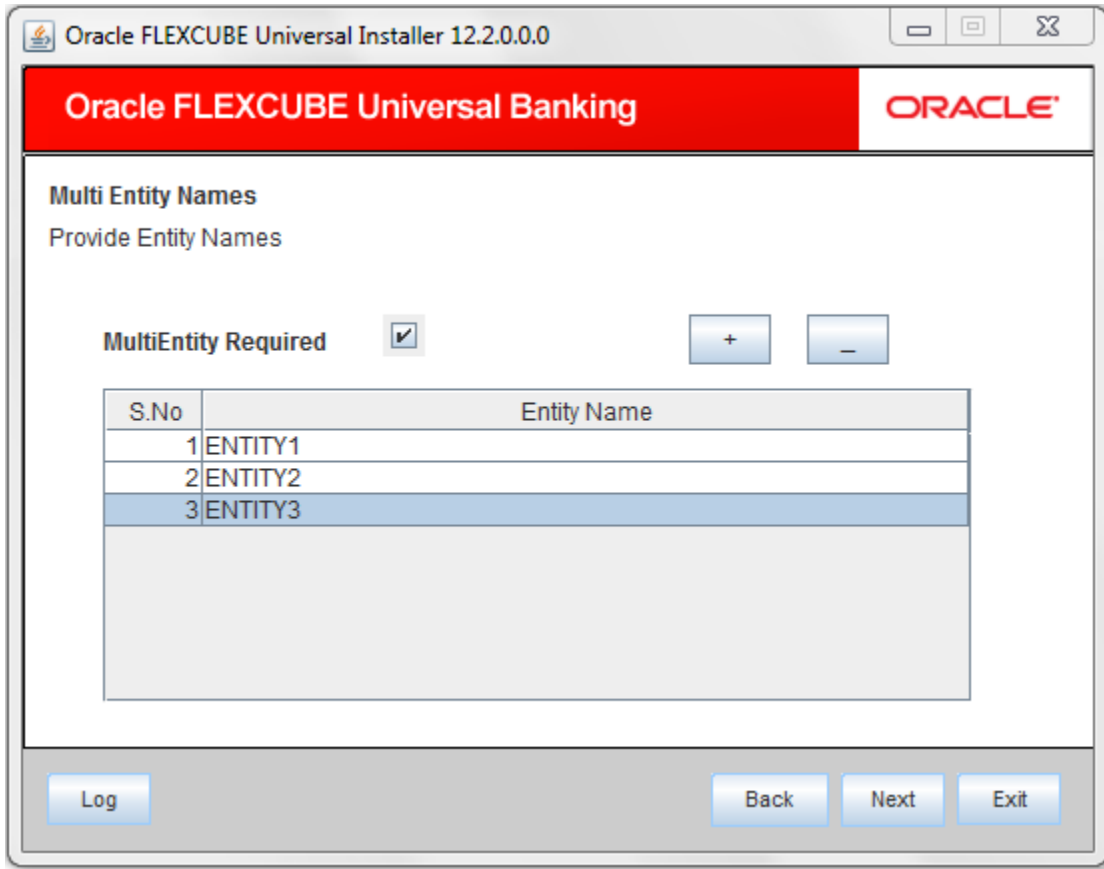


8. Specify the following details:

The property file needs to be built before the EAR file. If you are creating a new property file, leave the field blank. If you wish to modify an existing property file, you can manually specify the location of the property file.

### 1.2.1 **Enabling Multi entity**

This section describes the process of enabling multi entity of Oracle FLEXCUBE. The installer displays the 'Multi Entity' screen.



### MultiEntity Required

Select the multi entity check box for enabling the multi entity deployment.

After selected the multi entity option '+', '-' buttons will be enabled for capturing the entity Name

#### + Button:

New row will be added for capturing new entity name.

#### - Button:

Select the entity name and click – button, will be deletion of existing entity name

#### Entity Name:

Enter the entity name as single word

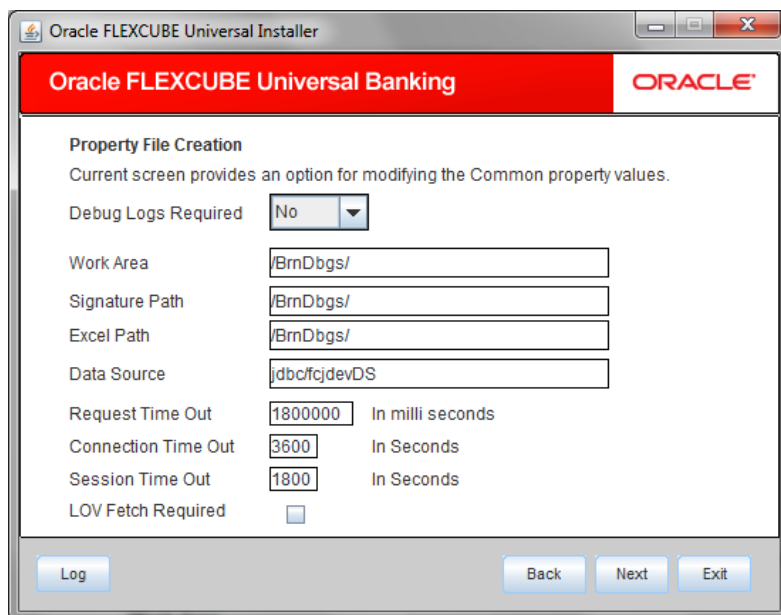
For example: ENTITY1

Note: if all entities use the same resource (example: Queue, Queue connection factories), then enable multi entity flag otherwise create the separate scheduler for each entity.

## 1.2.2 Setting Common Properties

This section describes the process of setting common properties of Standalone Installer.

1. The installer displays the 'Common Properties' screen.



2. Specify the following details:

### **Debug Logs Required**

If you require debug option, select 'Yes' from the drop-down list. If you do not require debug option, select 'No'.

### **Work Area**

Specify the work area.

For example: D:\BrnDbgs\

### **Signature Path**

Specify the location at which the signature images are placed.

### **Excel Path**

Specify the location at which the excel files are generated.

### **Data Source**

Specify the JNDI location. The standard format is 'jdbc/fcjdevDS'.

### **Request Time Out**

Specify the database request timeout value in milli seconds. This is the maximum number of seconds the database waits for a query to return the result.

### **Connection Time Out**

Specify the database connection timeout value in seconds. This is the maximum number of seconds the application waits for a connection to the database to open.

### **Session Time Out**

Enter the session time out value in seconds. This is the maximum number of seconds during which the application gets active without any user intervention. If there is no user intervention continuously for the duration specified here, the user session gets expire.

### **LOV Fetch Required**

If you check this box, the option lists in Oracle FLEXCUBE displays the matching values based on the first characters that you enter in a field. If you specify the first three characters of a value to be entered in an option list and tab out, the system displays the complete list of values that are matching the first three characters.

If you do not check this, option lists does not show the matching values based on the first few characters. You need to specify the complete value against the field.

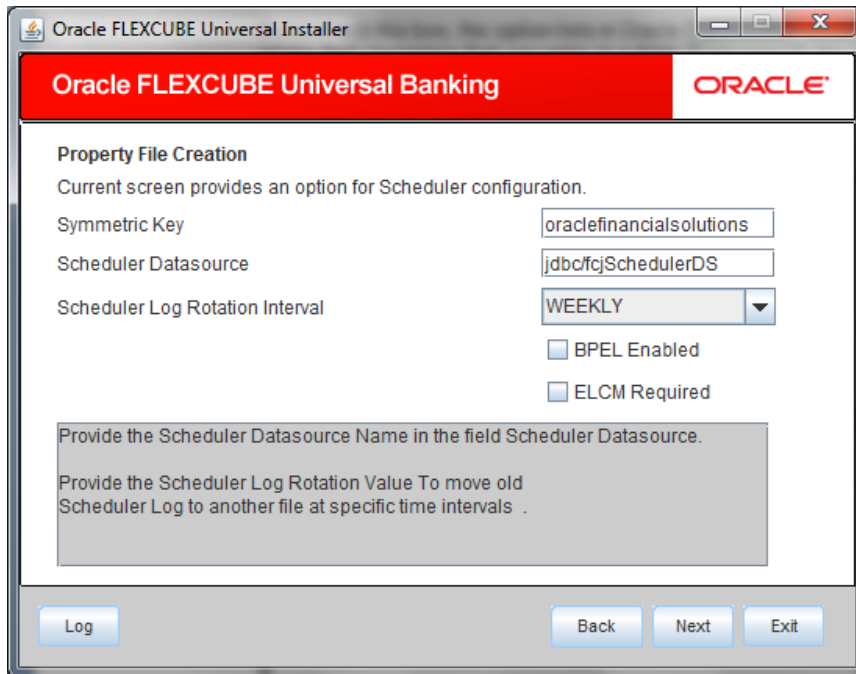
Click 'Next' and the following screen is displayed:

## **1.2.3 Configuring Scheduler**

This section describes the method to configure scheduler data source.

1. System displays the following screen:





2. Specify the following details:

**Scheduler Datasource**

Specify the scheduler datasource which Oracle FLEXCUBE will access.

**Symmetric Key**

Specify the symmetric key for encryption.

**Scheduler Log Rotation Interval**

Specify the scheduler log rotation interval..

**BPEL Enable**

Specify the scheduler has BPEL enabled or not.

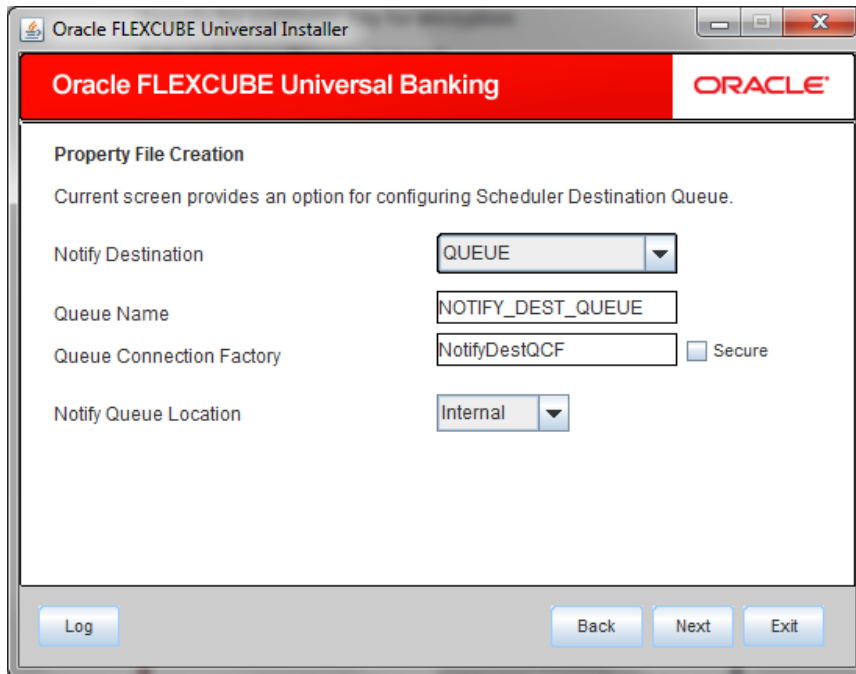
**ELCM Required**

Specify the scheduler , ELCM is required or not.

**Scheduler Log Rotation Interval**

Select the interval between each rotation of scheduler log.

3. Click 'Next' and the following screen is displayed:



4. Specify the following details:

#### **Notify Destination**

Specify the notify destination. Select one of the following options:

- QUEUE
- TOPIC

#### **Queue Name**

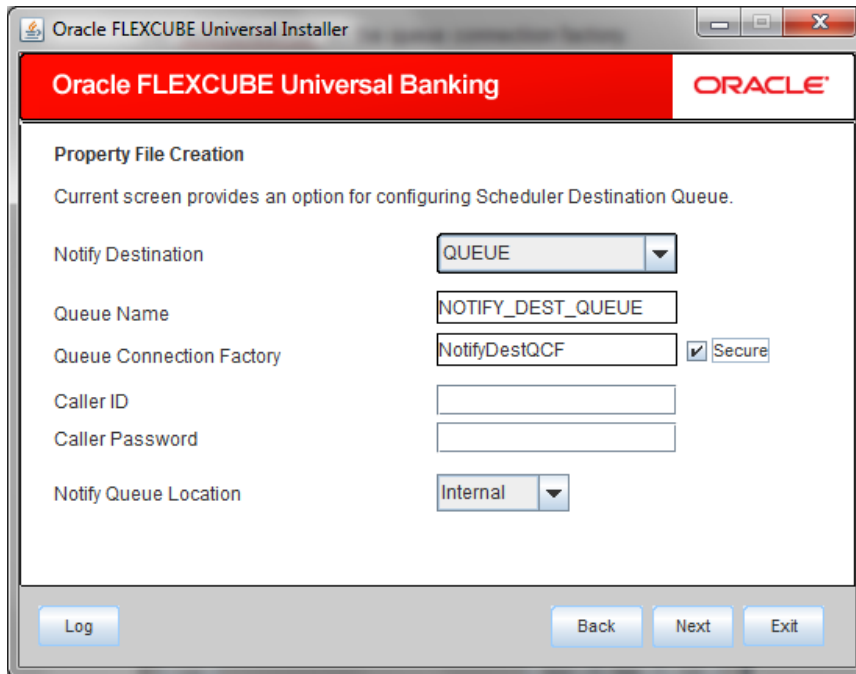
Set 'NOTIFY\_DEST\_QUEUE' as the destination queue name.

#### **Queue Connection Factory**

Set 'NotifyDestTCF' as the queue connection factory.

#### **Secure**

Check this box to indicate that it is a secured queue connection factory. If you check this box, you will be prompted to specify the caller ID and caller password as shown in the following screen.




### Caller ID

Specify the caller ID for the secured queue connection factory.

### Caller Password


Specify the password for the caller ID to access the secured queue connection factory.

 If the queue connection factory is not secured, i.e., if you have not checked the box 'Secure', the installer will not display the fields 'Caller ID' and 'Caller Password'. You need not provide these details in that case.

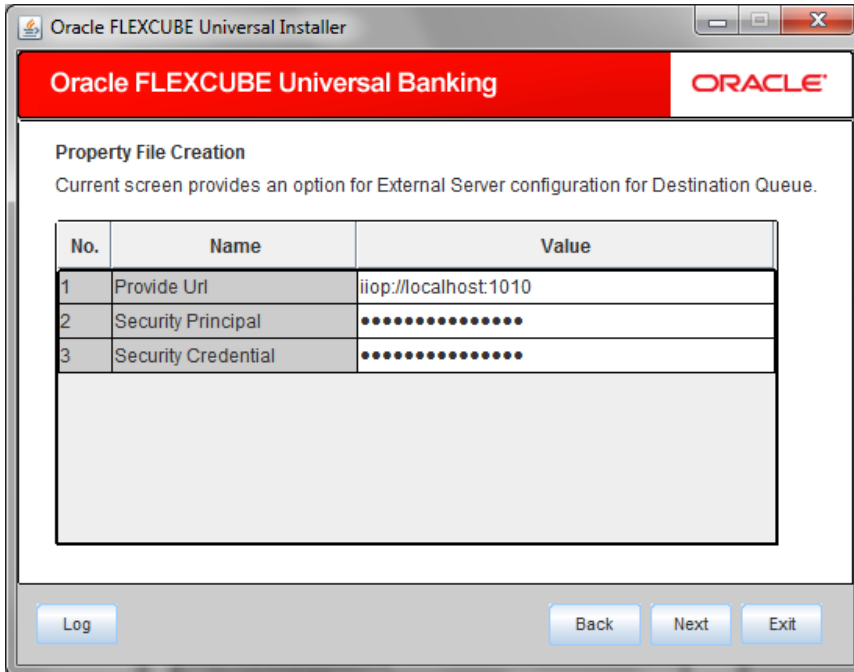
### Notify Queue Location

Specify the notify queue location. Select one of the following options:

- Internal
- External

 For Oracle WebLogic application server, the notify queue location should be selected as 'Internal'. If you choose 'Internal' as the 'Notify Queue Location', the screen provided in the following step does not get displayed. You will be navigated to next step where you can specify the notify deferred queue name and connection factory.

5. If you choose 'External', system displays the following screen:



6. Specify the following details of the external queue.

**Provider URL**

Specify the provide URL (iiop://localhost:1010).

1010 is the default IIOp port.


**Security Principal**

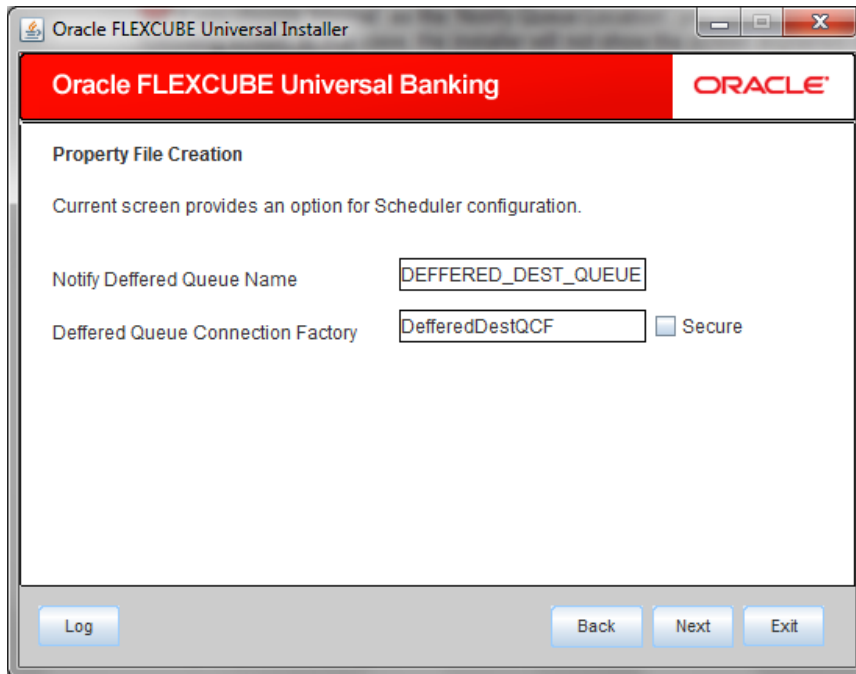
Specify the login ID to access the application server.

**Security Credentials**

Specify the password to access the application server.

7. Click 'Next' to proceed with scheduler configuration.

 If you choose 'Internal' as the 'Notify Queue Location', you will be directly navigated to the following screen. In that case, the installer will not show the screen explained in the previous step.



8. Specify the following details:

**Notify Deferred Queue Name**

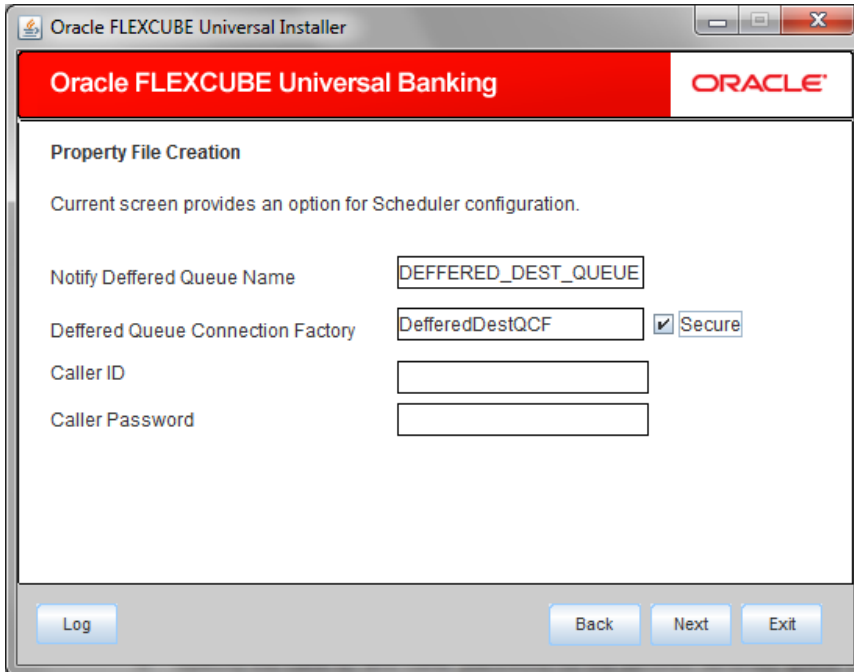
Set 'DEFERRED\_DEST\_QUEUE' as the notify deferred queue name.

**Deferred Queue Connection Factory**

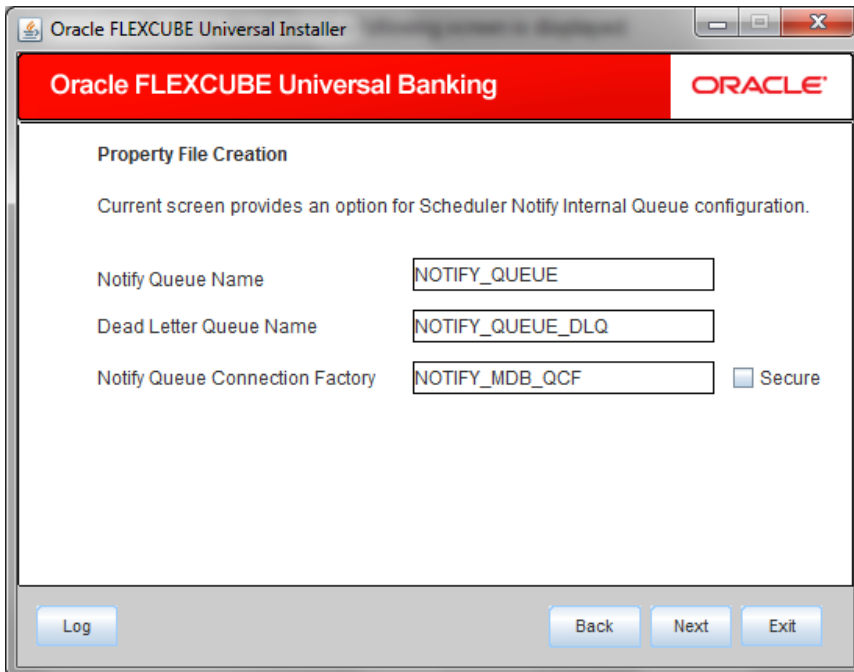
Set 'DeferredDestQcf' as the deferred queue connection factory.

**Secure**

Check this box to indicate that it is a secured deferred queue connection factory. If you check this box, you will be prompted to enter the caller ID and caller password as shown in the following screen.



9. Specify the caller ID and caller password for the secured deferred queue connection factory.
10. Click 'Next' and the following screen is displayed:



11. Specify the following details:

### Notify Queue Name

Set 'NOTIFY\_QUEUE' as the notify queue name.

### Dead Letter Queue Name

Set 'NOTIFY\_QUEUE\_DLQ' as the dead letter queue name.

### Notify Queue Connection Factory

Set 'NOTIFY\_MDB\_QCF' as the notify queue connection factory.

### Secure

Check this box to indicate that it is a secured queue connection factory. If you check this box, you will be prompted to enter the caller ID and caller password as shown in the following screen.

Oracle FLEXCUBE Universal Installer

Oracle FLEXCUBE Universal Banking ORACLE

Property File Creation

Current screen provides an option for Scheduler Notify Internal Queue configuration.

Notify Queue Name: NOTIFY\_QUEUE

Dead Letter Queue Name: NOTIFY\_QUEUE\_DLQ

Notify Queue Connection Factory: NOTIFY\_MDB\_QCF  Secure

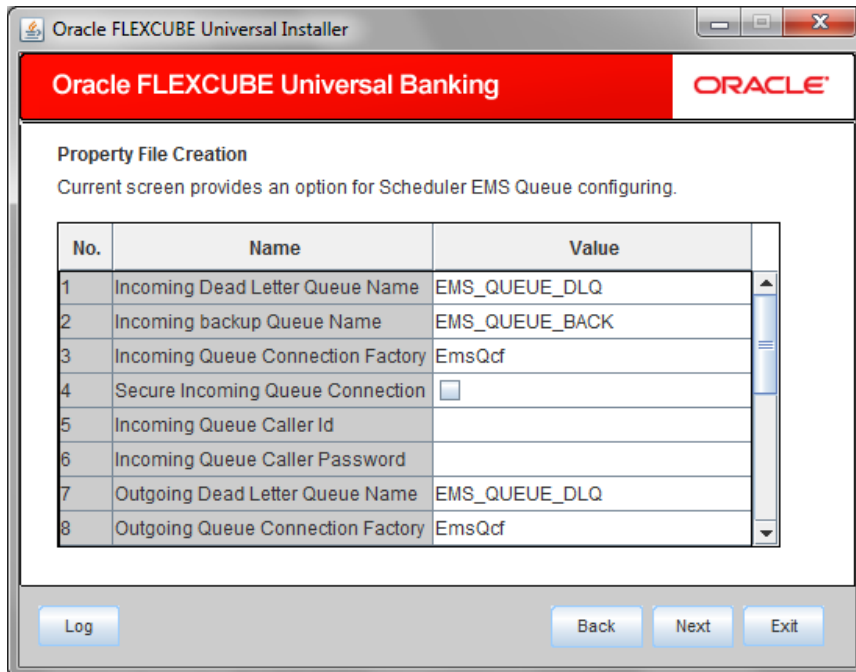
Caller ID: [Empty]

Caller Password: [Empty]

Log Back Next Exit

12. Specify the caller ID and caller password for the secured notify queue connection factory.

13. Click 'Next' and the following screen is displayed:



Specify the following details:

**Incoming Dead Letter Queue Name**

Set 'EMS\_QUEUE\_DLQ' as the incoming dead letter queue name.

**Incoming Backup Queue Name**

Set 'EMS\_QUEUE\_BACK' as the incoming backup queue name.

**Incoming Queue Connection Factory**

Set 'EmsQcf' as the incoming queue connection factory.

**Secure Incoming Queue Connection**

Check this box to indicate that it is a secured queue connection.

**Incoming Queue Caller ID**

Specify the caller ID for the secured queue connection.

**Incoming Queue Caller Password**

Specify the caller password for the secured queue connection.

**Outgoing Dead Letter Queue Name**

Set 'EMS\_QUEUE\_DLQ' as outgoing dead letter queue name.



### **Outgoing Queue Connection Factory**

Set 'EmsQcf' as the outgoing queue connection factory.

### **Secure Outgoing Queue Connection**

Check this box to indicate that it is a secured outgoing queue connection.

### **Outgoing Queue Caller ID**

Specify the caller ID for the secured queue connection.

### **Outgoing Queue Caller Password**

Specify the caller Password for the secured queue connection.

### **Outgoing Queue Provider URL**

Specify the URL of the outgoing queue.

### **Queue Principal**

Specify the queue principal.

### **Queue Credential**

Specify the queue credential.

### **Incoming Queue Name**

Specify the incoming queue name.

### **Outgoing Queue Name**

Specify the outgoing queue name.

### **SFMS Incoming Queue**

Specify the SFMS Incoming Queue.

### **RTGS Incoming Queue**

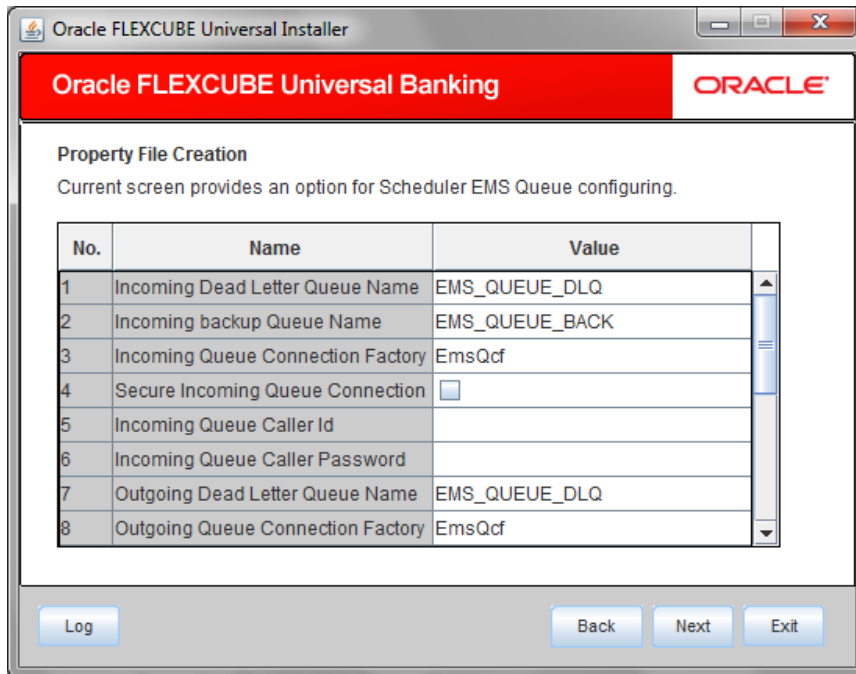
Specify the RTGS incoming Queue.

Once you have specified the above details, click 'Next' and system displays the next screen.

## **1.2.4 Setting EMS Properties**

You will be navigated to the 'Scheduler EMS Properties' screen. Here, you need to set the EMS details.

1. Set the EMS properties:



2. Specify the following details:

### **OutGoing Connection Factory**

Specify the name of the outgoing connection factory to which EMS listens. You need to create this connection factory at the application server.

For details on connection factory creation, follow the steps described for creation of notify connection factories.

### **Incoming Connection Factory**

Specify the name of the incoming connection factory to which EMS listens. You need to create this connection factory at the application server.

For details on connection factory creation, follow the steps described for creation of notify connection factories.

### **Outgoing Queue Name**

Specify the name of the outgoing queue for which EMS is configured. By default, this is set as 'NOTIFY\_QUEUE\_DLQ'.

### **Incoming Queue Name**

Specify the name of the incoming queue for which EMS is configured. By default, this is set as 'NOTIFY\_QUEUE\_DLQ'.

### Incoming Backup Queue Name

Specify the name of the incoming backup queue for which EMS is configured.

### Outgoing Queue Provider URL

In case EMS OUT MDB is to be configured to queue, you need to specify the URL for outgoing provider based on the application server. By default, the Installer displays the outgoing queue provider URL for Oracle WebLogic.

This value is application server dependent.

The details of Outgoing Queue Provider URL to be used for different application servers are given below:

Application Server	EMS Out Initial Context Factory
Oracle WebLogic	t3://<ip_address>:port E.g.: t3://10.10.10.10:1010 Here, 10.10.10.10 represents the local host and 1010 to the target server default port (AdminServer/ManagedServer).
IBM WebSphere	iiop://<ip_address>:port E.g.: iiop://10.10.10.10:1010 Here, 1010 represents the default iiop port

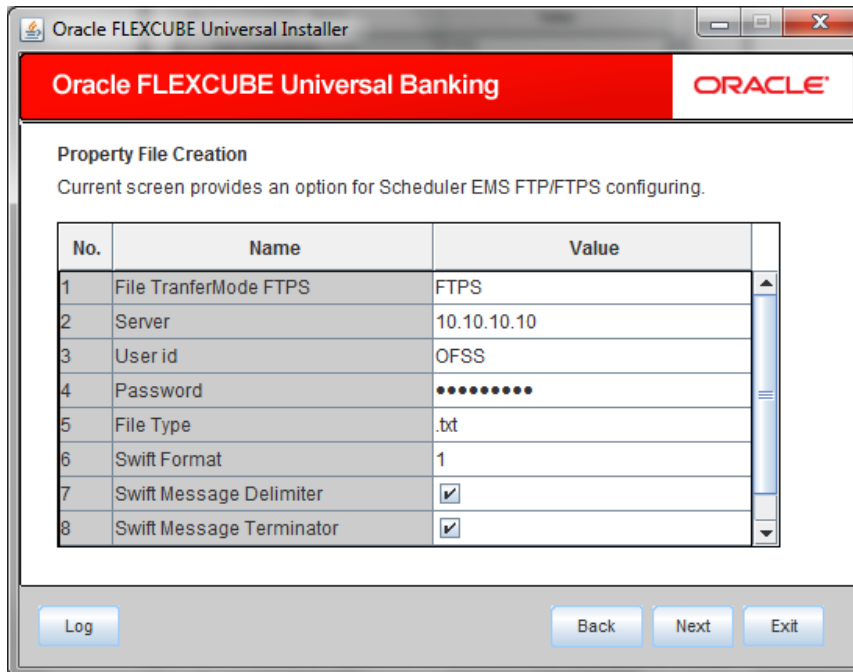
### Queue Principal

If EMS OUT MDB has to be configured to queue, you need to specify the EMS out queue principal. This is the user name for the application server in which the queue is configured.

### Queue Credential

If EMS OUT MDB has to be configured to queue, you need to specify the EMS out queue credential. This is the password for the above user name created for application server in which the queue configured.

3. Once you have specified the above details, click 'Next' and the following screen is displayed:



4. Specify the following details:

#### **File Transfer Mode FTPS**

Specify the mode of transferring files to EMS. Select one of the following:

- FTPS
- SFTP
- HTTP

#### **Server**

Specify the server IP address for the selected file transfer mode.

#### **User ID**

Specify the user ID to access the server of the file transfer mode.

#### **Password**

Specify the password to for the above user ID.

#### **File Type**

Specify the type of file that is transferred. By default, the Installer sets it as '.txt'.

#### **SWIFT Message Delimiter**

Specify the character which is used as the message delimiter.

## SWIFT Message Terminator

Specify the character which is used as the message terminator.

5. Once you have specified the above details, click 'Next'. and the following screen is displayed:

No.	Name	Value
1	Signature Block	<input checked="" type="checkbox"/>
2	Keystore File Name	/keystore
3	Keystore Alias name	*****
4	keystore Password	*****

6. Specify the following details:

### Signature Block

Check this box to enable signature block.

### Keystore File Name

Specify the keystore file name.

### Keystore Alias Name

Specify the keystore alias name.

### Keystore Password

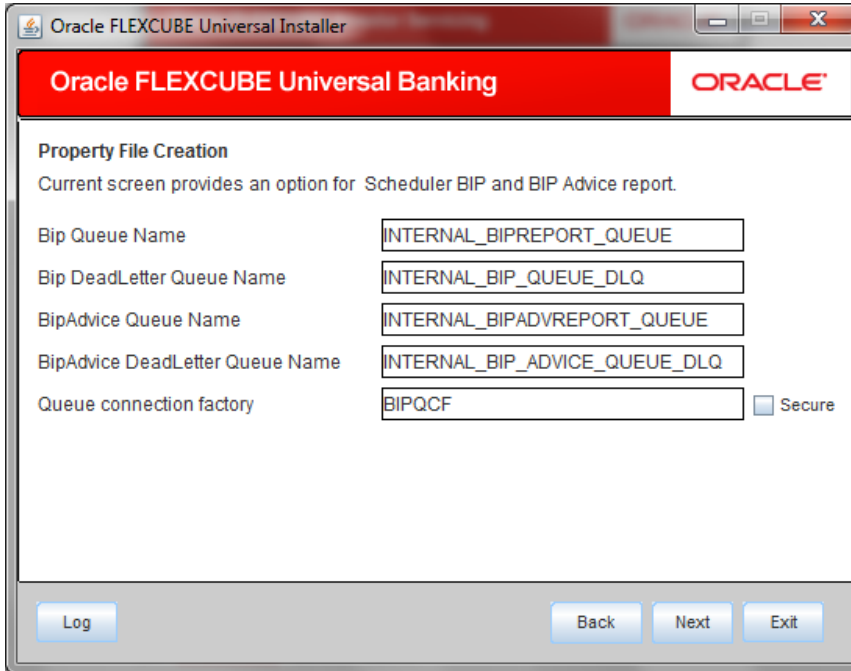
Specify the keystore password.

7. Once you have specified the above details, click 'Next' and system displays the next screen.

## 1.2.5 Setting BIP and BIP Advice Report

This screen describes how to create the property file. Here, you need to set the BIP and BIP Advice report details.

1. System displays the following screen:



The screenshot shows a window titled "Oracle FLEXCUBE Universal Installer" with a red header bar containing "Oracle FLEXCUBE Universal Banking" and the "ORACLE" logo. The main content area is titled "Property File Creation" and includes the text "Current screen provides an option for Scheduler BIP and BIP Advice report." Below this, there are five input fields with the following values: "Bip Queue Name" (INTERNAL\_BIPREPORT\_QUEUE), "Bip DeadLetter Queue Name" (INTERNAL\_BIP\_QUEUE\_DLQ), "BipAdvice Queue Name" (INTERNAL\_BIPADVREPORT\_QUEUE), "BipAdvice DeadLetter Queue Name" (INTERNAL\_BIP\_ADVICE\_QUEUE\_DLQ), and "Queue connection factory" (BIPQCF). A "Secure" checkbox is present next to the "Queue connection factory" field. At the bottom, there are three buttons: "Log", "Back", and "Next", and an "Exit" button.

2. Specify the following details to set the EMS properties:

### **BIP Queue Name**

Specify the BIP queue name as 'INTERNAL\_BIPREPORT\_QUEUE'.

### **BIP DeadLetter Queue Name**

Specify the BIP deadletter queue name as 'INTERNAL\_BIP\_QUEUE\_DLQ'.

### **BIPAdvice Queue Name**

Specify the BIP advice queue name as 'INTERNAL\_BIPADVREPORT\_QUEUE'.

### **BIPAdvice DeadLetter Queue Name**

Specify the BIP advice dead letter queue name as 'INTERNAL\_BIP\_ADVICE\_QUEUE\_DLQ'.

### **Queue Connection Factory**

Specify the queue connection factory as 'BIPQCF'.

## Secure

Check this box to indicate that it is a secured deferred queue connection factory. If you check this box, you will be prompted to enter the caller ID and caller password as shown in the following screen:

Oracle FLEXCUBE Universal Banking

ORACLE

**Property File Creation**  
Current screen provides an option for Scheduler BIP and BIP Advice report.

Bip Queue Name: INTERNAL\_BIPREPORT\_QUEUE

Bip DeadLetter Queue Name: INTERNAL\_BIP\_QUEUE\_DLQ

BipAdvice Queue Name: INTERNAL\_BIPADVREPORT\_QUEUE

BipAdvice DeadLetter Queue Name: INTERNAL\_BIP\_ADVICE\_QUEUE\_DLQ

Queue connection factory: BIPQCF  Secure

Caller ID: [Empty]

Caller password: [Empty]

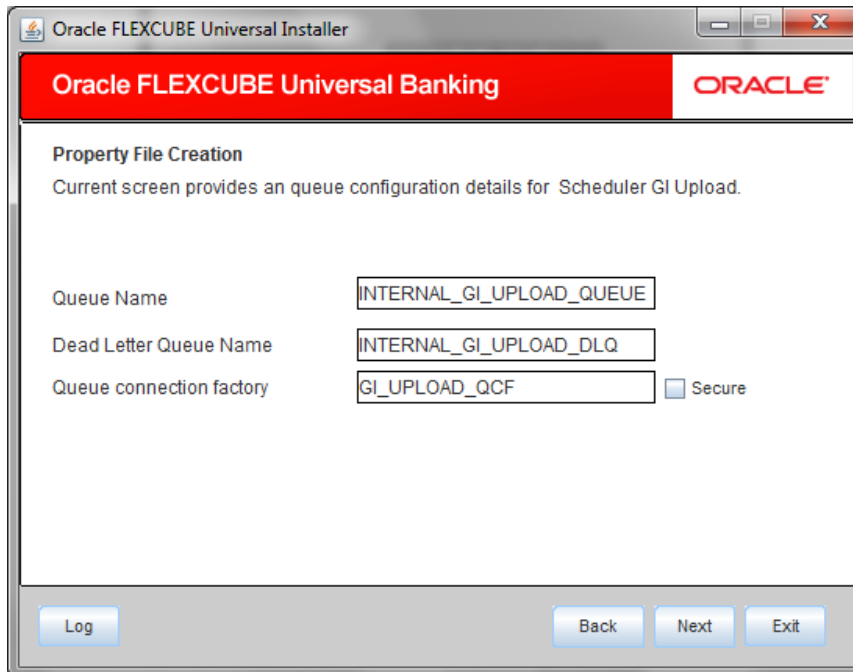
Log Back Next Exit

3. Specify the caller ID and caller password for the secured queue connection factory.
4. Once you have specified the above details, click 'Next' and system displays the next screen.

### 1.2.6 Setting GI Upload Properties

This screen describes how to specify the GI upload property details. Here you need to set the GI Upload properties.

1. System displays the following screen:



2. Specify the following details:

**Queue Name**

Specify the queue name as 'INTERNAL\_GI\_UPLOAD\_QUEUE'.

**Dead Letter Queue Name**

Specify the dead letter queue name as 'INTERNAL\_GI\_UPLOAD\_DLQ'.

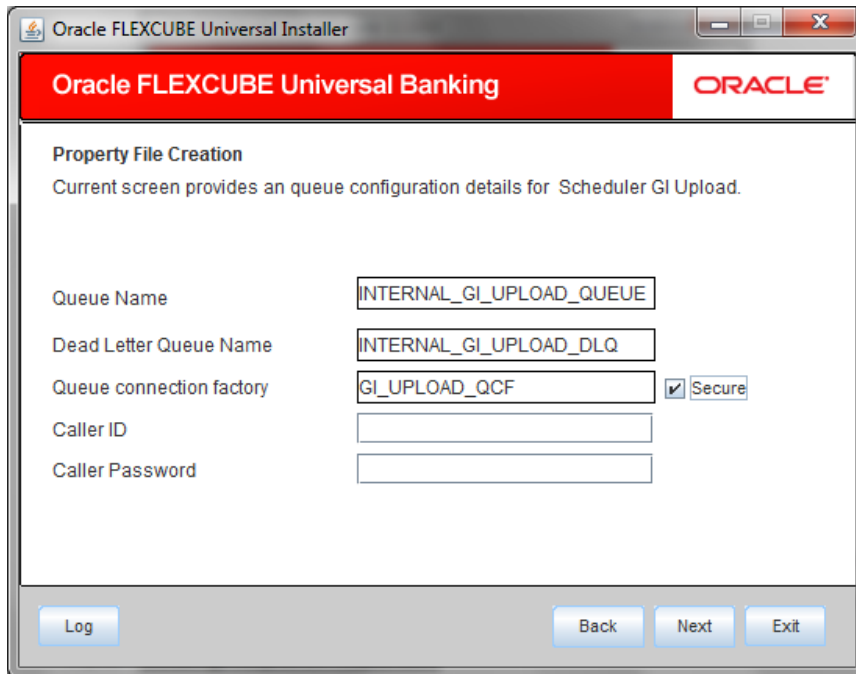
**Queue Connection Factory**

Specify the queue connection factory as 'GI\_UPLOAD\_QCF'.

**Secure**

Check this box to indicate that it is a secured deferred queue connection factory. If you check this box, you will be prompted to enter the caller ID and caller password as shown in the following screen:



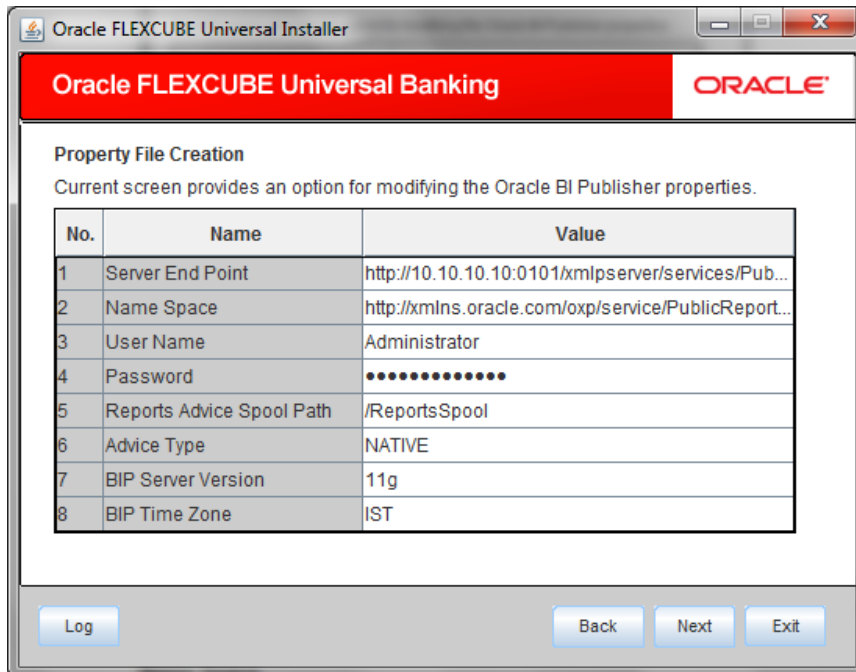


3. Specify the caller ID and caller password for the secured queue connection factory.
4. Once you have specified the above details, click 'Next' and system displays the next screen.

### 1.2.7 Setting Report Properties

This section describes the methods to set report properties.

1. System displays the following screen:



2. Specify the following details:

### Server End Point

Specify the BIP end point.

'http://10.10.10.10:1010/xmlpserver/services/PublicReportService\_v11'. However, you need to change the IP and port where BIP Application is installed. WSDL URL gets modified based on "BIP Server Version" on selecting the required version from the dropdown.

### Name Space

Specify the BIP name space.

By default, the installer displays 'http://xmlns.oracle.com/oxp/service/PublicReportService'.

### User Name

Specify the BIP user name. By default, the Installer displays 'Administrator'.

### Password

Specify the password for the above user name. By default, the Installer sets it as 'Administrator'.

### Reports Spool Path

Specify the reports spool path. By default, the Installer displays D:\.

### **Advice Type**

Specify the advice type. You can choose one of the following:

- NATIVE – This advice type is used for generating advices in text format
- BIP – This advice type is used for generating advices in PDF format.

### **BIP Server Version**

Specify the qualified BIP server version. You can select the appropriate one from the adjoining drop-down list.

### **BIP Time Zone**

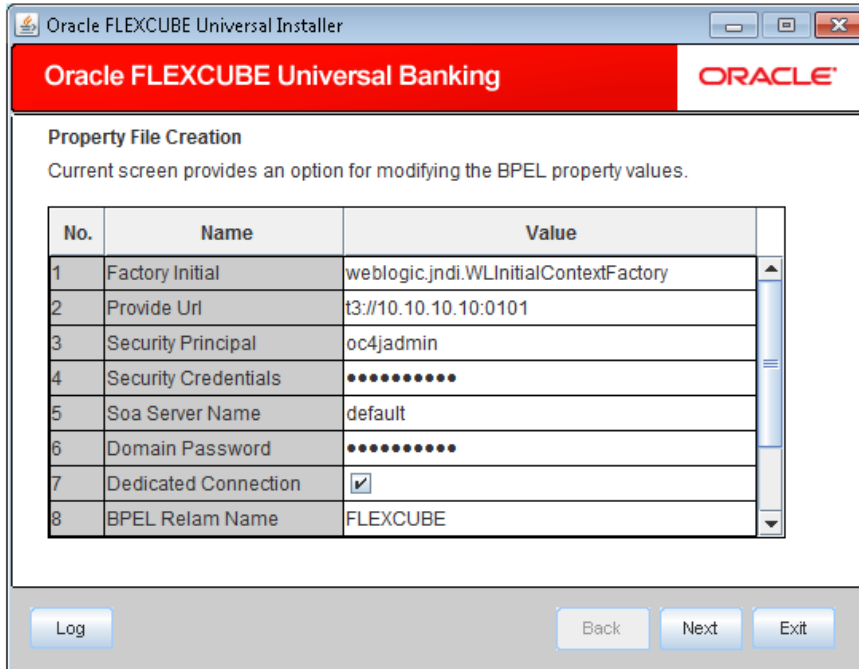
Specify the time zone of the BIP server.

3. Once you have specified the above details, click 'Next' and the system displays the next screen.
4. Once you have specified the above details, click 'Next' and the next screen is displayed:

## **1.2.8 Setting BPEL Properties**

If you have selected BPEL Enabled option, then you need to set the BPEL properties.

5. Set the BPEL properties.



Specify the following details:

**Factory Initial**

Specify the factory initial.

**Provider URL**

Specify the URL of the server. Enter the IP address, target server port (AdminServer/ManagedServer) and the context root.

**Security Principal**

Specify the user name to access the application server where BPEL is installed.

**Security Credential**

Specify the password for the above user name.

**Soa Server Name**

Specify the Soa Server Name. By default it will be the Installer sets it to 'default'.

**Domain Password**

Specify the domain password for which SOA server is extended

**Dedicated Connection**

Check this box to indicate that this connection is not used for other purposes.

### BPEL Realm Name

Specify the BPEL realm name.

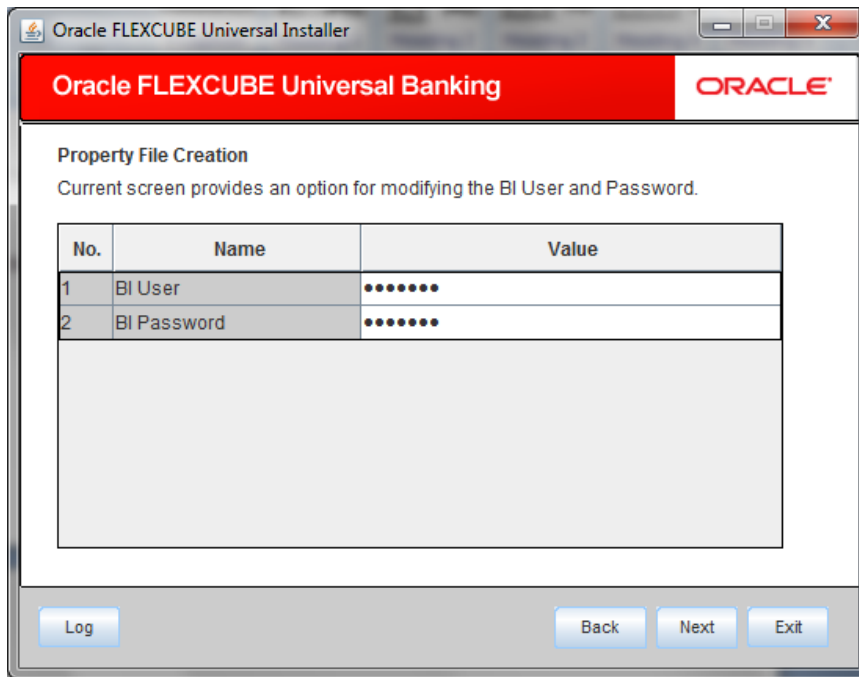
### BAM URI

Specify the BAM URI.

### BPM Installed

Check this box if the BPM is installed.

6. Once you have set the above details, click 'Next'. The following screen is displayed:



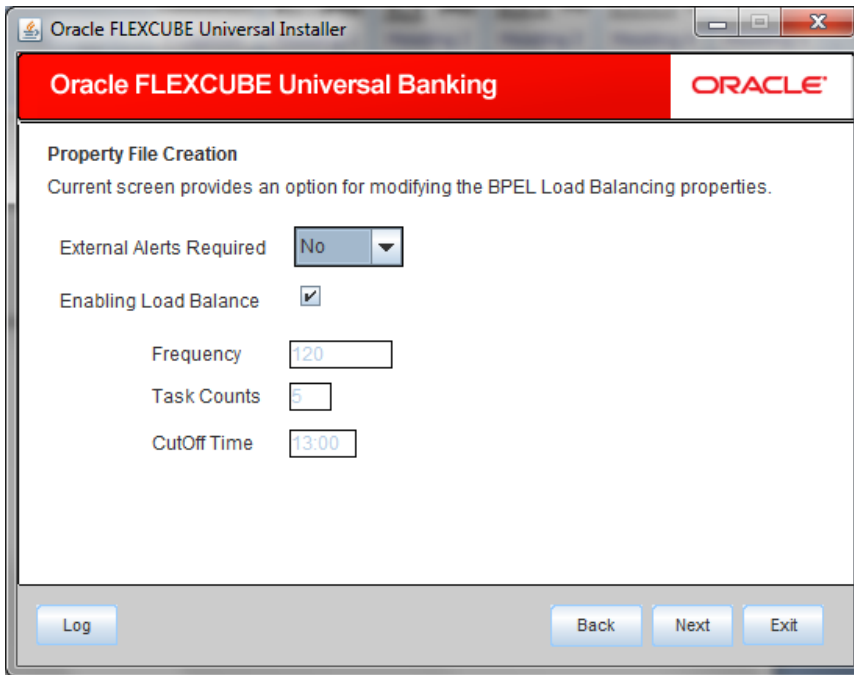
### BI User

Specify the BI user .

### BI Password

Specify the password for BI user.

7. Once you have set the above details, click 'Next'. The following screen is displayed:



Specify the following details:

**External Alerts Required**

Check this box to enable External Alerts Required.

**Enabling Load Balance**

Check this box to enable BPEL load balance.

**Frequency**

Specify the balance load frequency.

**Task Counts**

Specify the balance load task count.

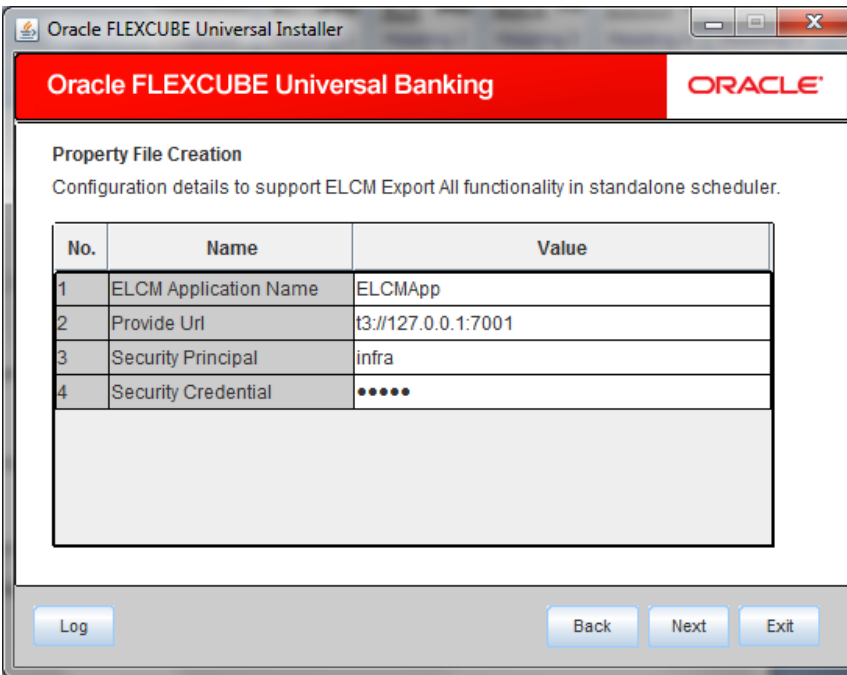
**Cut-off Time**

Specify the balance load cut-off time.

8. Once you have specified the above details, click 'Next' and system displays the next screen.

## 1.2.9 Setting ELCM Properties

If you have selected ELCM required option, then you need to set the ELCM properties.



Oracle FLEXCUBE Universal Banking

ORACLE

**Property File Creation**  
Configuration details to support ELCM Export All functionality in standalone scheduler.

No.	Name	Value
1	ELCM Application Name	ELCMAApp
2	Provide Url	t3://127.0.0.1:7001
3	Security Principal	infra
4	Security Credential	•••••

Log Back Next Exit

### **ELCM Application Name**

Specify the ELCM application Name.

### **Provide URL**

Specify the provide URL

### **Security Principal**

Specify the login ID to access the application server.

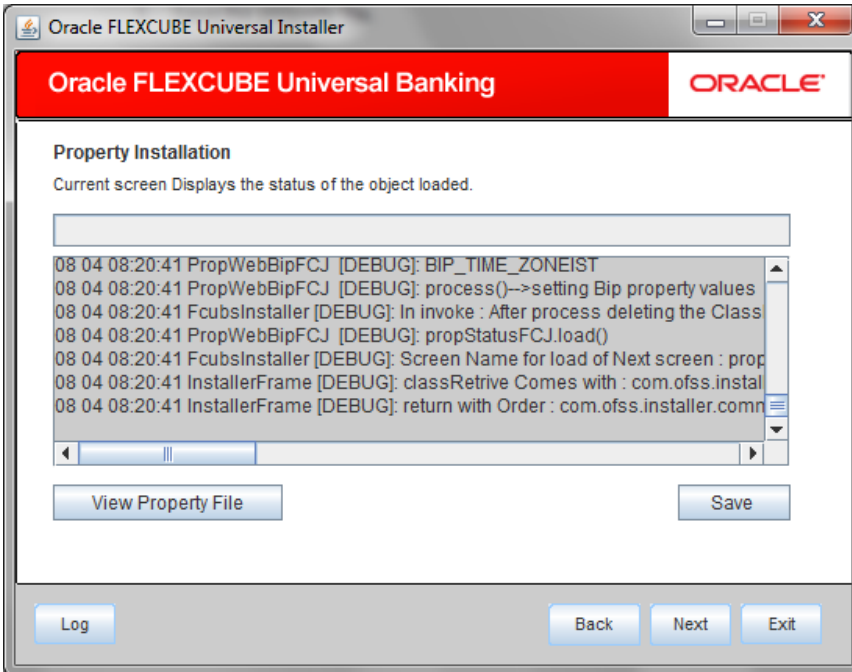
### **Security Credentials**

Specify the password to access the application server.

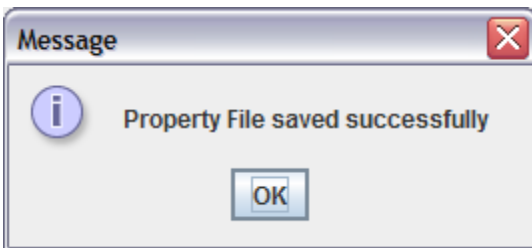
## 1.2.10 Saving Property File

After completing all the required settings explained above, you need to save the property file.

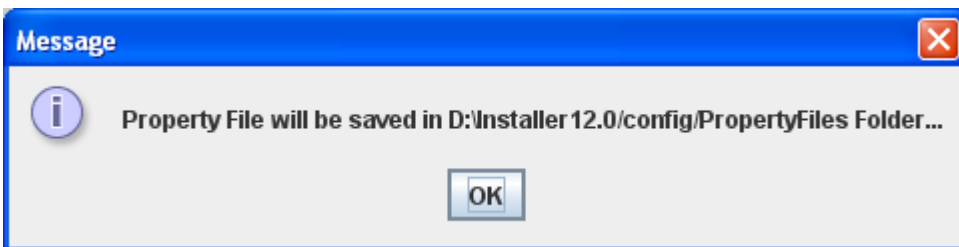
1. Save the property file.



2. You can view the status of property file creation in the above screen. Once the file is saved, the installer displays the following message:



3. If you do not use the 'Save' or 'Save As' buttons, the installer will save the properties file in '<InstallerSources>\config\PropertyFiles' folder. In that case, you will see the message below.



This completes the properties file creation.





Standalone Scheduler Property File Creation  
[December] [2016]  
Version 12.3.0.0.0

Oracle Financial Services Software Limited  
Oracle Park  
Off Western Express Highway  
Goregaon (East)  
Mumbai, Maharashtra 400 063  
India

Worldwide Inquiries:  
Phone: +91 22 6718 3000  
Fax: +91 22 6718 3001  
[www.oracle.com/financialservices/](http://www.oracle.com/financialservices/)

Copyright © [2007], [2016], Oracle and/or its affiliates. All rights reserved.

Oracle and Java are registered trademarks of Oracle and/or its affiliates. Other names may be trademarks of their respective owners.

**U.S. GOVERNMENT END USERS:** Oracle programs, including any operating system, integrated software, any programs installed on the hardware, and/or documentation, delivered to U.S. Government end users are "commercial computer software" pursuant to the applicable Federal Acquisition Regulation and agency-specific supplemental regulations. As such, use, duplication, disclosure, modification, and adaptation of the programs, including any operating system, integrated software, any programs installed on the hardware, and/or documentation, shall be subject to license terms and license restrictions applicable to the programs. No other rights are granted to the U.S. Government.

This software or hardware is developed for general use in a variety of information management applications. It is not developed or intended for use in any inherently dangerous applications, including applications that may create a risk of personal injury. If you use this software or hardware in dangerous applications, then you shall be responsible to take all appropriate failsafe, backup, redundancy, and other measures to ensure its safe use. Oracle Corporation and its affiliates disclaim any liability for any damages caused by use of this software or hardware in dangerous applications.

This software and related documentation are provided under a license agreement containing restrictions on use and disclosure and are protected by intellectual property laws. Except as expressly permitted in your license agreement or allowed by law, you may not use, copy, reproduce, translate, broadcast, modify, license, transmit, distribute, exhibit, perform, publish or display any part, in any form, or by any means. Reverse engineering, disassembly, or decompilation of this software, unless required by law for interoperability, is prohibited.

The information contained herein is subject to change without notice and is not warranted to be error-free. If you find any errors, please report them to us in writing.

This software or hardware and documentation may provide access to or information on content, products and services from third parties. Oracle Corporation and its affiliates are not responsible for and expressly disclaim all warranties of any kind with respect to third-party content, products, and services. Oracle Corporation and its affiliates will not be responsible for any loss, costs, or damages incurred due to your access to or use of third-party content, products, or services.